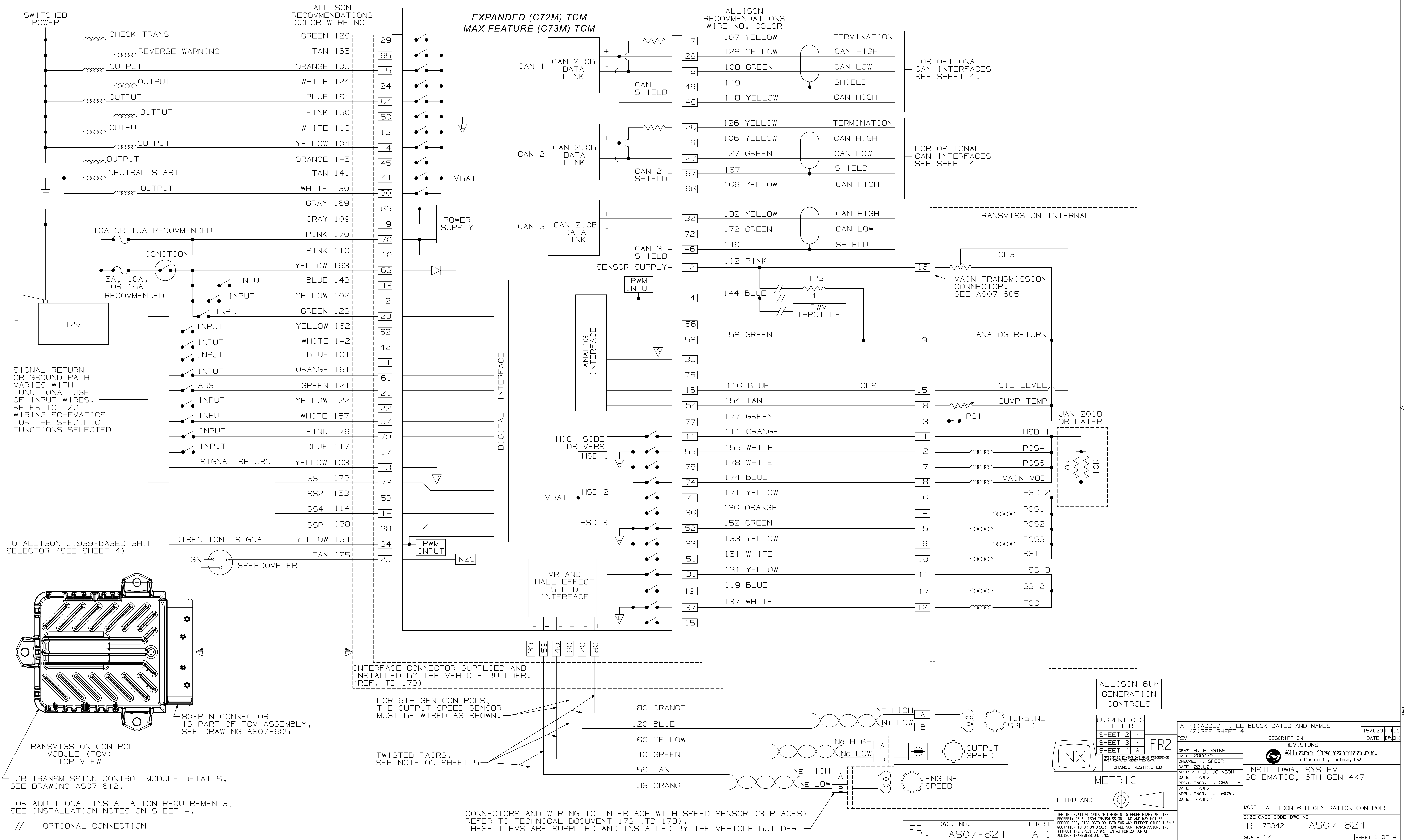
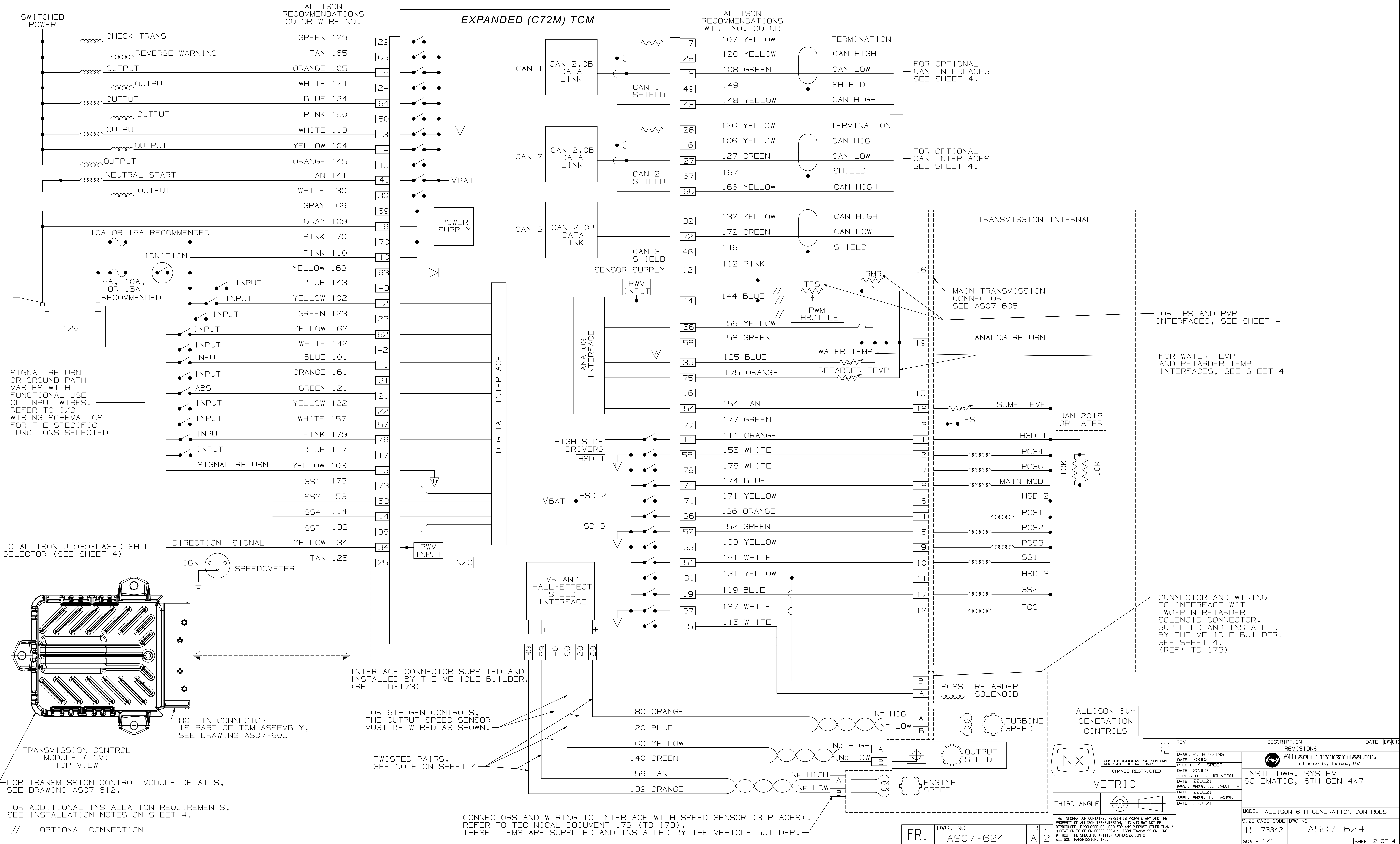


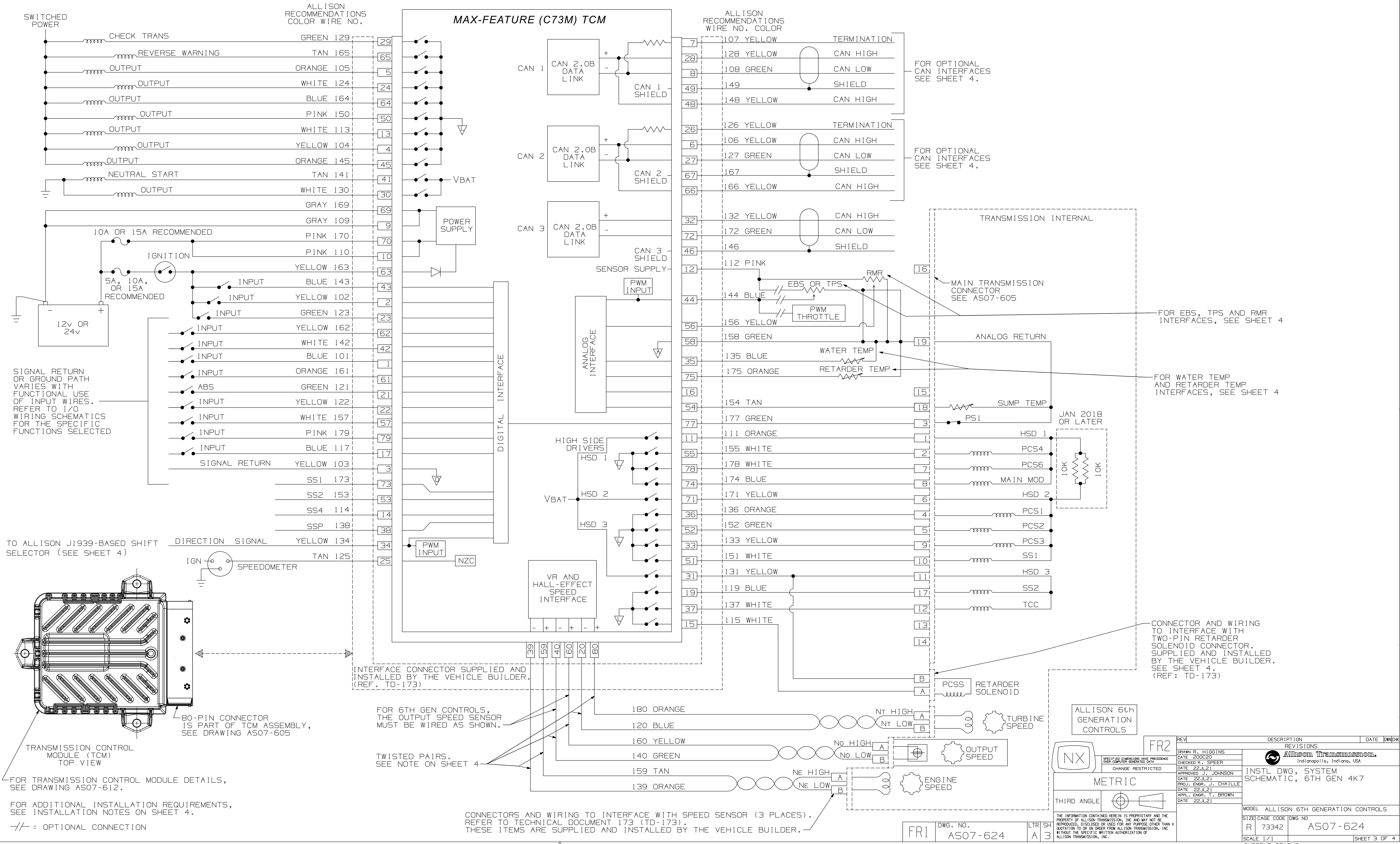
FOR 4000 PRODUCT FAMILY 7-SPEED NON-RETARDER MODELS



FOR 4000 PRODUCT FAMILY 7-SPEED MODELS WITH RETARDER



FOR 4000 PRODUCT FAMILY 7-SPEED MODELS WITH RETARDER



INSTALLATION NOTES

TCM MUST RECEIVE IGNITION POWER WHEN ENGINE CONTROL MODULE RECEIVES POWER IF SENSORS ARE SHARED BETWEEN THE TWO MODULES OR IF COMMUNICATION BETWEEN THE TWO MODULES IS NECESSARY.

MATING CONNECTORS ARE SUPPLIED AND INSTALLED BY THE VEHICLE BUILDER.

WIRE SIZE 0.75 mm² (18 AWG) EXCEPT WHERE NOTED.

WHERE TWISTED PAIRS OF WIRES ARE ILLUSTRATED, REQUIRED TWIST RATE IS 16 ± 4 TWISTS PER 300 mm.

ALL LIGHTS, SWITCHES, ALARM INDICATORS, ELECTRONIC SPEEDOMETER, ELECTRONIC ENGINE CONTROLS, AND ILLUMINATION CONTROL ARE SUPPLIED AND INSTALLED BY THE VEHICLE BUILDER.

FOR J1939 INTERFACE CONSIDERATIONS REFER TO DATALINK COMMUNICATION TECH DATA.

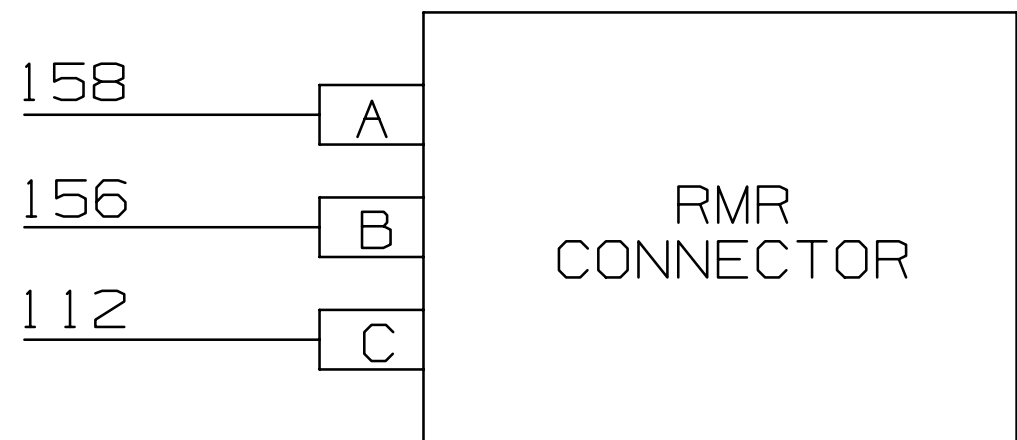
FOR OPERATING DATA, SEE CONTROL SYSTEM DATA.

REFER TO TECHNICAL DOCUMENT 173 (TD173) FOR INFORMATION ON WIRING HARNESES.

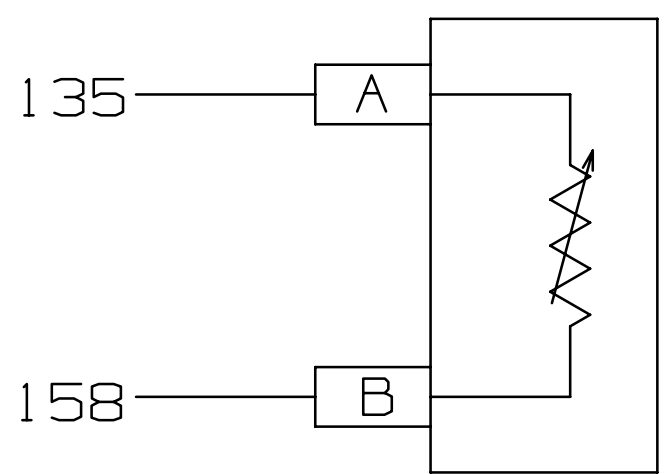
INSERT CAVITY PLUGS IN ALL OPEN CAVITIES OF SPECIFIED CONNECTORS. QUANTITY WILL VARY ACCORDING TO INSTALLATION INTERFACE REQUIREMENTS. THE PLUG IS TO BE INSERTED UNTIL THE LARGER DIAMETER IS FLUSH WITH THE CONNECTOR GROMMET.

WHEN FEATURES ARE NOT USED, ALL LEAD WIRES TO THOSE FEATURES ARE TO BE OMITTED.

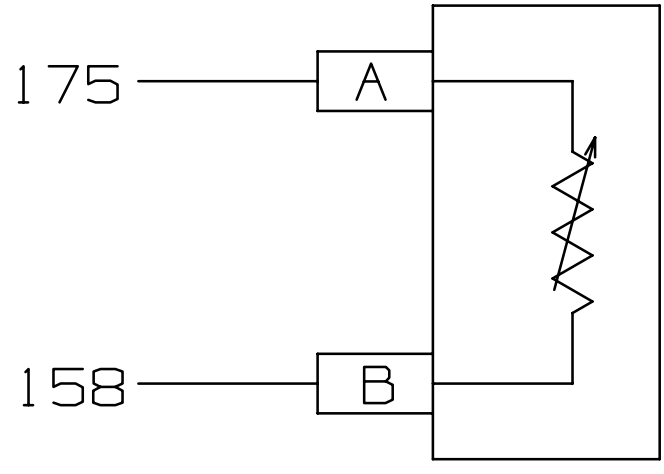
RETARDER MODULATION REQUEST (RMR) INTERFACE



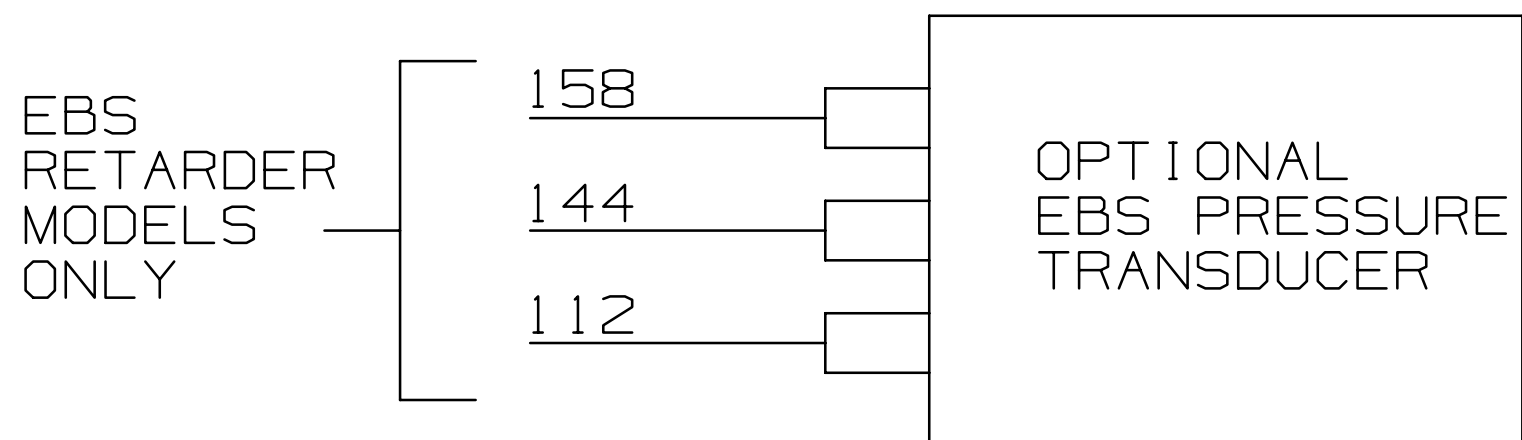
WATER TEMP SENSOR INTERFACE



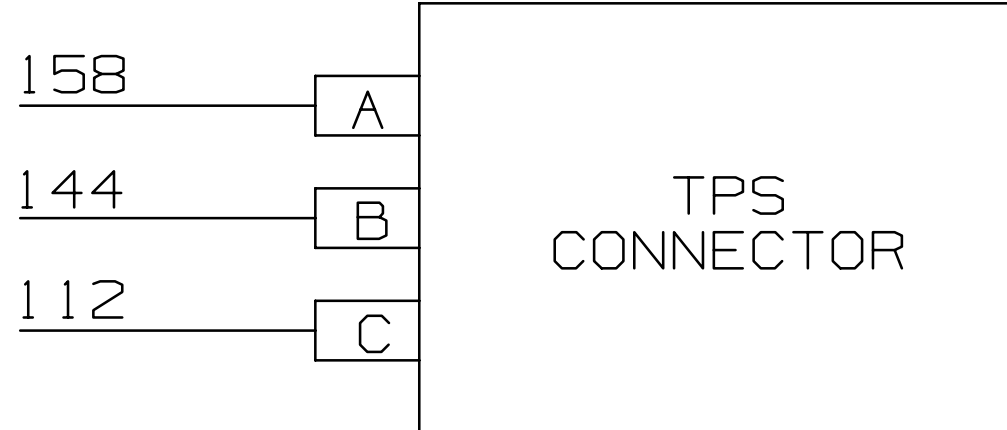
RETARDER TEMP SENSOR INTERFACE



ELECTRONIC BRAKING SYSTEM (EBS) INTERFACE

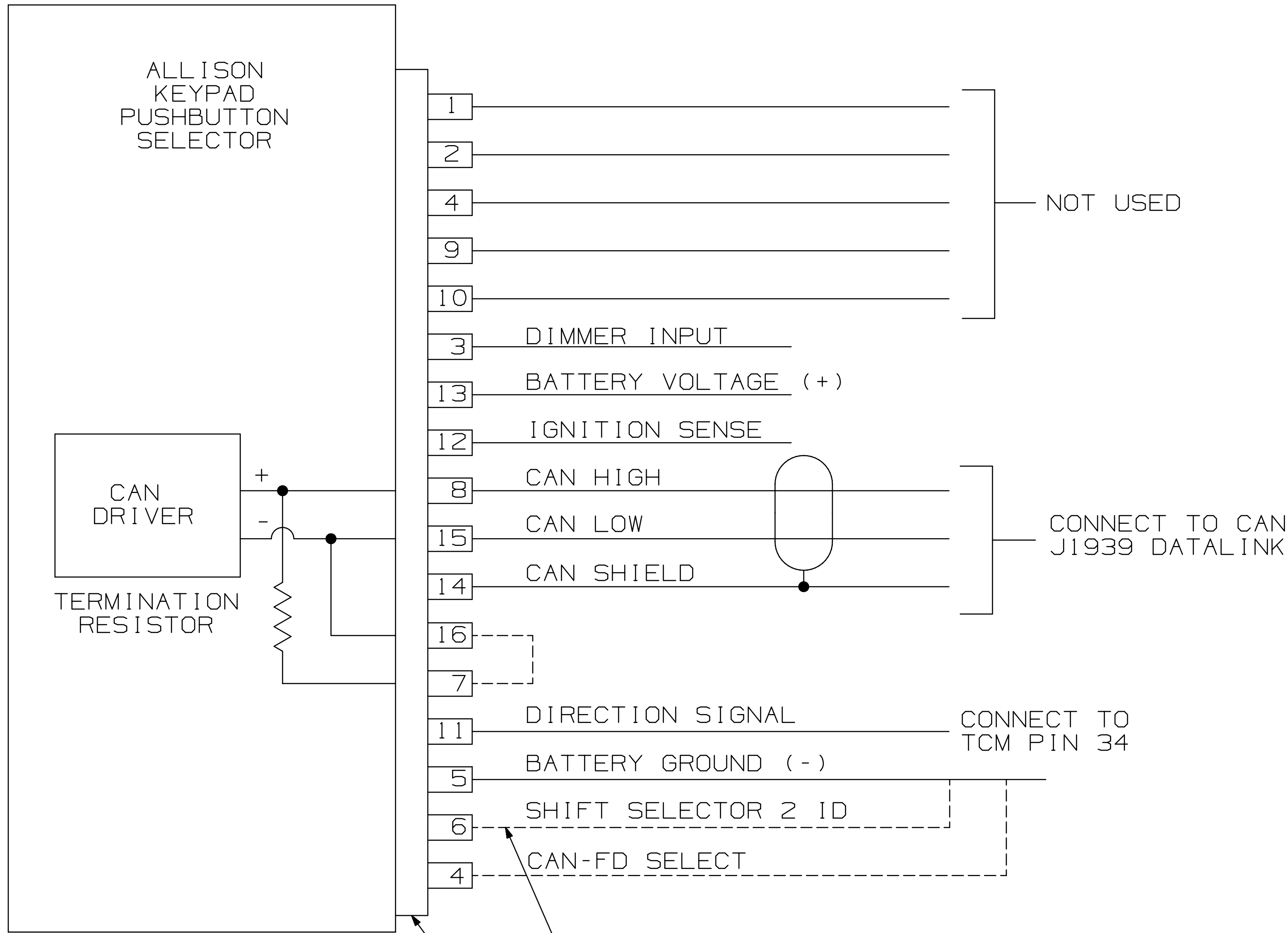


THROTTLE POSITION SENSOR (TPS) INTERFACE



TPS CANNOT BE USED ON RETARDER EQUIPPED TRANSMISSIONS USING EBS

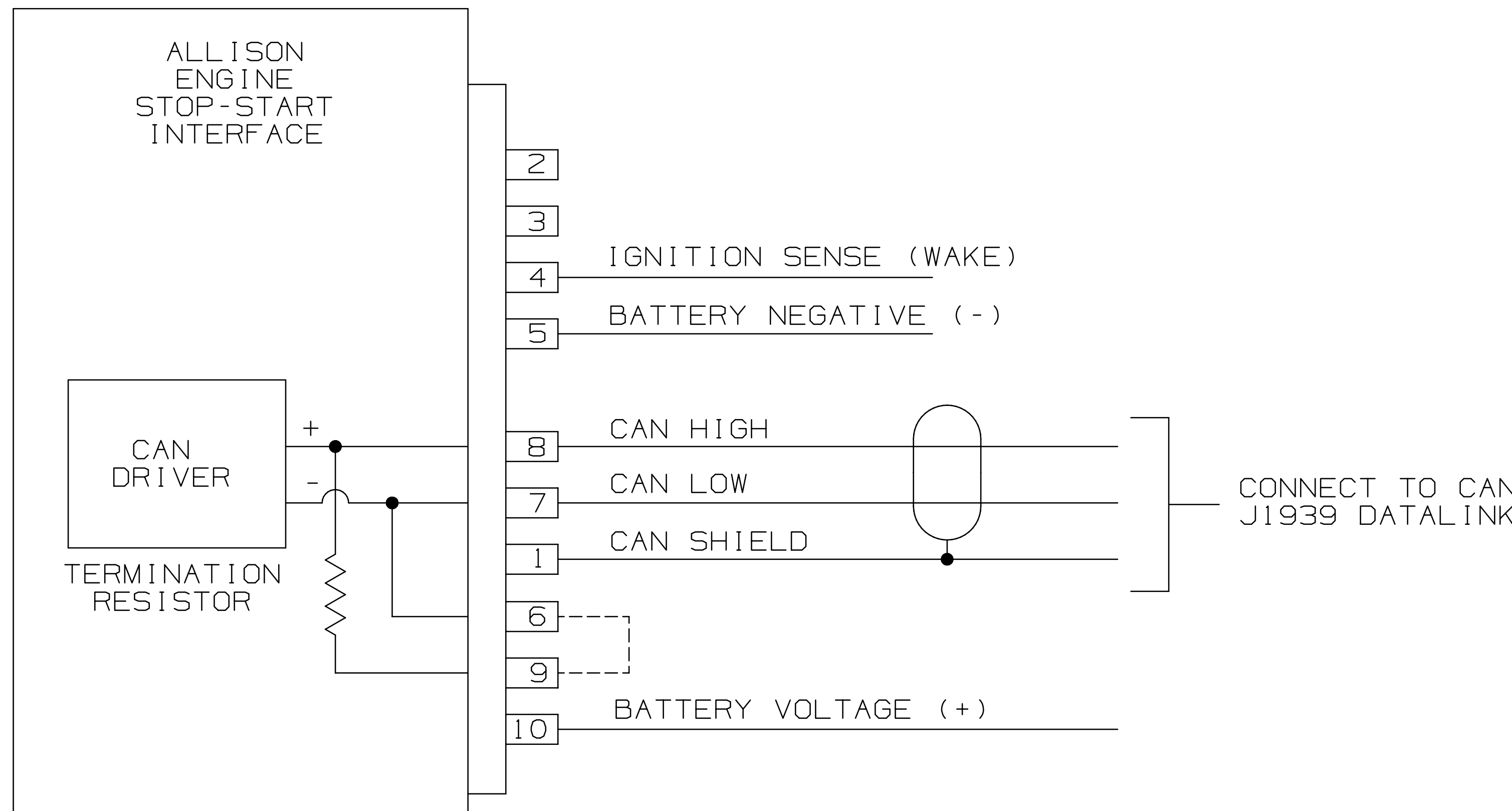
ALLISON J1939-BASED SHIFT SELECTOR INTERFACE
KEYPAD PUSHBUTTON SELECTOR



THIS WIRE IS REQUIRED WHEN DUAL SELECTORS ARE INSTALLED. INSTALL ONLY ON SELECTOR 2. BOTH SELECTORS MUST BE ON SAME CAN NETWORK. REFER TO ALLISON 6TH GENERATION CONTROLS "CONTROLS COMPONENT INSTALLATION": FOR ADDITIONAL DETAILS.

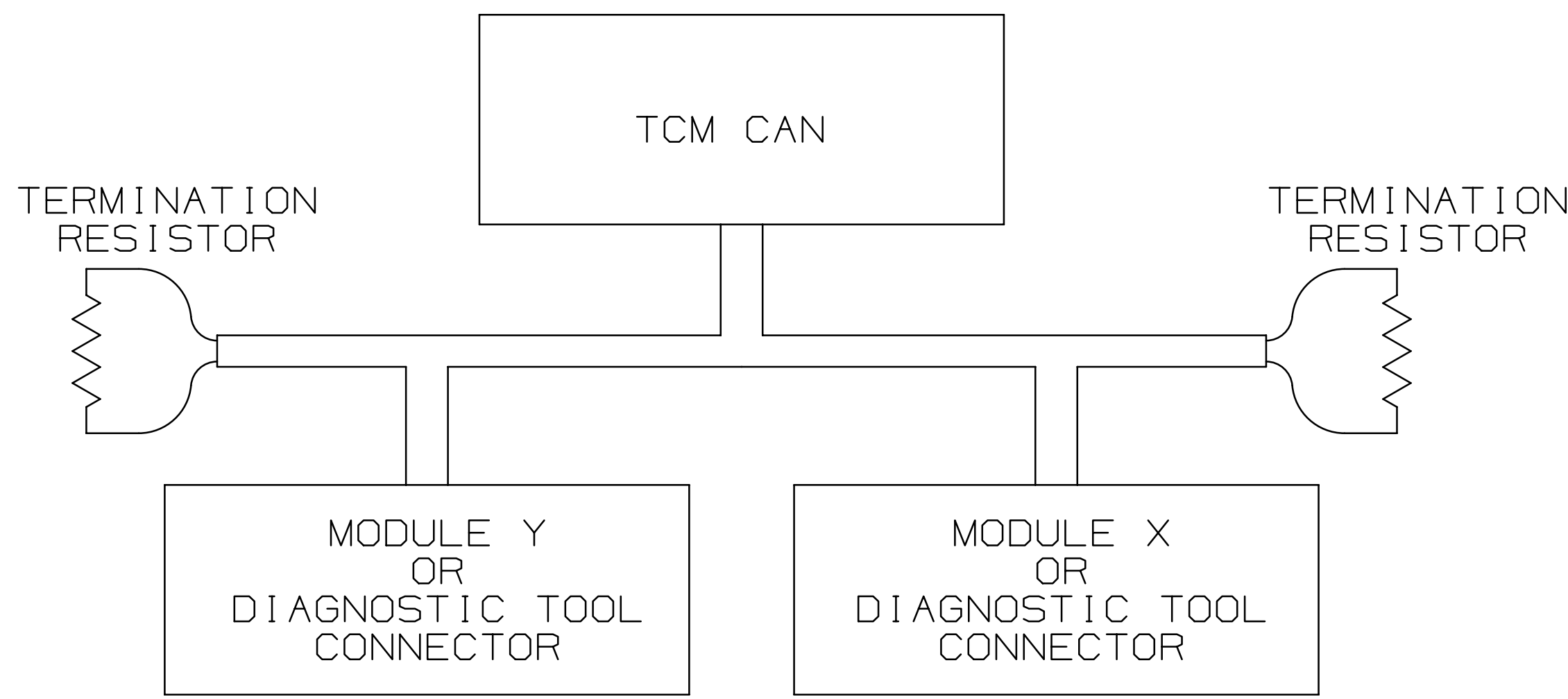
16-PIN CONNECTOR IS PART OF SHIFT SELECTOR ASSEMBLY, SEE DRAWING AS07-605.

ENGINE STOP-START PUMP INTERFACE

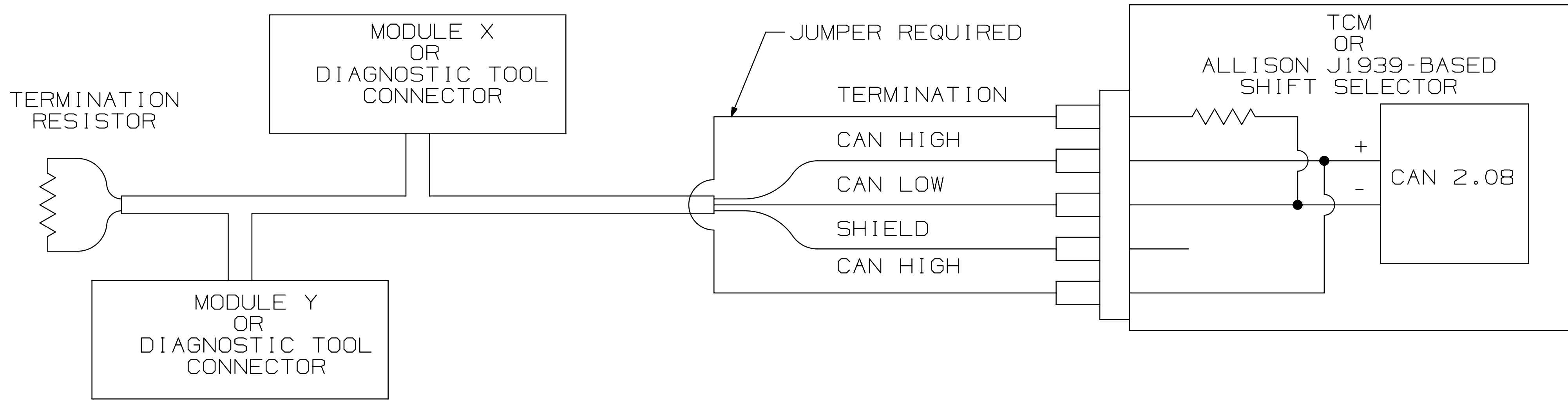


OPTIONAL CONFIGURATIONS FOR TCM CAN INTERFACES

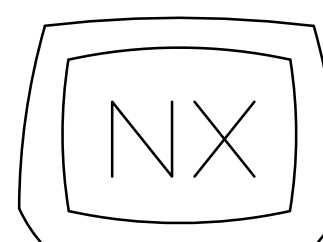
OPTION 1 TCM ON NORMAL NODE



OPTION 2 CAN 1 AND CAN 2 ONLY



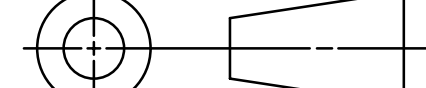
ALLISON 6th
GENERATION
CONTROLS



FR2

METRIC

THIRD ANGLE



THE INFORMATION CONTAINED HEREIN IS PROPRIETARY AND THE PROPERTY OF ALLISON TRANSMISSION, INC AND MAY NOT BE REPRODUCED, DISCLOSED OR USED FOR ANY PURPOSE OTHER THAN A QUOTATION TO OR ON ORDER FROM ALLISON TRANSMISSION, INC WITHOUT THE SPECIFIC WRITTEN AUTHORIZATION OF ALLISON TRANSMISSION, INC.

FR1

DWG. NO.
AS07-624

LTR

SH

A

4

A (1) ADDED "ENGINE STOP-START PUMP INTERFACE" SCHEMATIC		15AU23 RHJC
REV	DESCRIPTION	DATE
REVISIONS		
DATE	200C20	
CHECKED	K. SPEER	
DATE	22JUL21	
APPROVED	J. JOHNSON	
DATE	22JUL21	
PROJ. ENGR.	J. CHATLLE	
DATE	22JUL21	
APPL. ENGR.	T. BROWN	
DATE	22JUL21	
MODEL ALLISON 6TH GENERATION CONTROLS		
SIZE	CAGE CODE	DWG NO
R	73342	AS07-624
CURRENT STATUS: RX-Released - EXP		
SHEET 4 OF 4		

DWG NO
AS07-624